

# The SD-Card Full Setup Application:

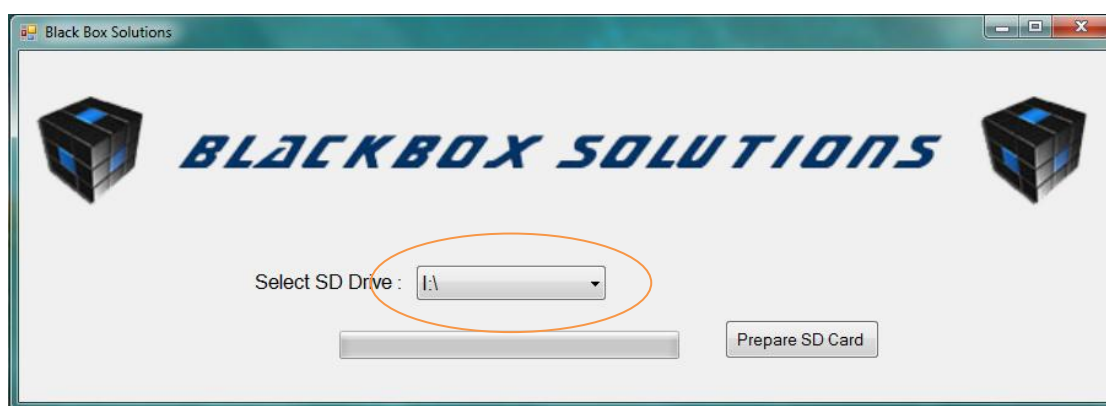
From BlackBox Solutions

This is a stand-alone software application developed by BlackBox Solutions for the express purpose of completely setting up the Nanocom's CAN-BUS Kit supplied SD cards and other SD cards for use with CAN-BUS vehicles.

## Using the application:

To use this application couldn't be simpler. All you need is to plug your SD card either directly into your PC/Laptop or, plug the SD card into the Nanocom and connect it to the PC/Laptop via the mini-USB cable.

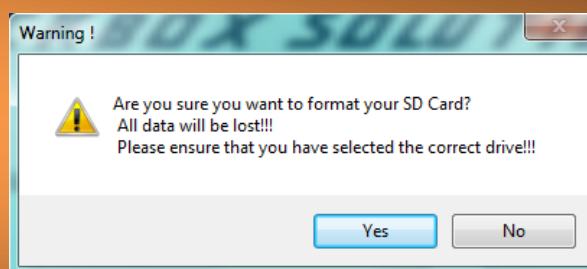
Once you have seen your PC/Laptop recognise the SD card as an external memory device, start the SD Card App and you'll see this window:



From the drop-down box (circled above), select the drive that represents the SD card, whether it be plugged in directly, through an external card reader or plugged into your Nanocom unit to the PC/Laptop.

Once the SD card has been recognised, the *Prepare SD Card* button will become active, pressing the button the first time will prompt you this message:

**Please be sure to read the warning properly before pressing "Yes".**



Please Note: Using the Nanocom Evolution as an external card reader to run this application can take several minutes to complete.

Once you have pressed "Yes", the application will then format (deletes all content) the SD card and inform you of this action. You can now press "OK". The application will now start the process of preparing the SD card to the correct settings to work with the Nanocom Evolution.

This involves setting the File Type, Memory Allocation and Attributes. Once those settings have been arranged, the application will now copy to the SD card the correct SBL and BBS folders, containing all of the correct software (in the SBL folder only, the BBS folder is empty) that allows CAN-BUS Vehicle ECU flashing and programming.

No more input is required from the user, just a click on the "OK" when the application has informed you that "All Files have been transferred". Your SD Card is now ready to use with your Nanocom Evolution.

For more information about the SD Card's uses with the Nanocom Evolution, please see the following guides:

- Nanocom Evolution CAN-BUS Functions & Coverage manual
  - Nanocom Evolution Software & Hardware manual
- Nanocom Evolution Legacy vehicles Functions & Coverage manual

All available from this following web page:

<http://www.nanocom-diagnostics.com/documentation.php>